

**GOLD, COPPER, SILVER
IN PREMIER MINERAL REGION IN PERU**

High-Grade Potential and Ready for Discovery

Investor Presentation January 2026

CORPORATE SNAPSHOT


ACM

ASX CODE


106.7M

SHARES ON ISSUE

43,443,754 (listed ACMOA, \$0.30 exp 26/6/26)
9,092,270 (unlisted \$0.10 exp 22/9/2027)
Performance Rights: 5,000,000


\$0.086

SHARE PRICE

SHAREHOLDERS

MANAGEMENT 17%

TOP 20 59%

TOP 50 73%

BOARD & MANAGEMENT



Dean De Largie, Executive Chairman

Dean has more than 30 years' global exploration experience and has been central to identifying ACM's project opportunities. A Curtin-trained geologist and Fellow of the Australian Institute of Geoscientists, he provides technical direction and project assessments through his consultancy, Allied Rock Pty Ltd. Dean has extensive experience across Latin America - particularly Peru - where he has worked on multi-commodity projects for ASX, TSX and US-listed companies.



Paul Niardone, Non-Executive Director

Paul is an experienced director and executive with a strong track record in establishing and growing high-profile businesses. He is an Executive Director of The Agency Group Ltd, where he has played a key leadership role since 2013, and was previously the founder and Executive Director of Professional Public Relations, Western Australia's largest communications firm. Paul holds a degree in Politics and Industrial Relations and an MBA.



Allister Caird, Non-Executive Director

Allister is a geologist with more than 15 years' experience across exploration, project development and capital markets. He is currently CEO of Mount Ridley Mines Ltd (ASX: MRD), overseeing the advancement of its clay-hosted rare earth and gallium project in Western Australia. Previously, he was Head of Critical Minerals at Locksley Resources Ltd, where he led the company's downstream strategy in the United States and established a key strategic collaboration with Rice University.

WORLD-CLASS EXPLORATION ASSETS IN PERU

1

FLINT PROJECT

Gold, Silver

Large-scale, multi-million-ounce gold-silver opportunity with strong pathfinder geochemistry (+6000 ppm As, Se, Sb, Bi, Te, Th). Extensive alteration footprint and geophysical anomalies.

2

RIQUEZA PROJECT

Copper, Silver, Zinc, Lead

Tier-1 copper-silver-zinc-lead target with extensive high-grade rock samples (up to 8.7% Cu, 2238 g/t Ag, 31% Zn, 35% Pb). Multi-kilometre mineralised system with advanced exploration and defined drill targets.

3

BLANCA PROJECT

Gold, Silver

High-grade epithermal gold project with historical drilling (non-JORC 190,000 oz Au estimate). Best drill result: 9.5m @ 11.3 g/t from 64m incl 1.5m @ 52g/t Au. Open at depth and along strike, with significant untapped potential.

4

CERRO RAYAS PROJECT

Silver, Zinc, Lead

High-grade Zn-Pb-Ag mineralization (up to 46.08% Pb, 39.67% Zn, 26.8 g/t Ag), historic workings, and mapped underground adits. Strong exploration potential.

5

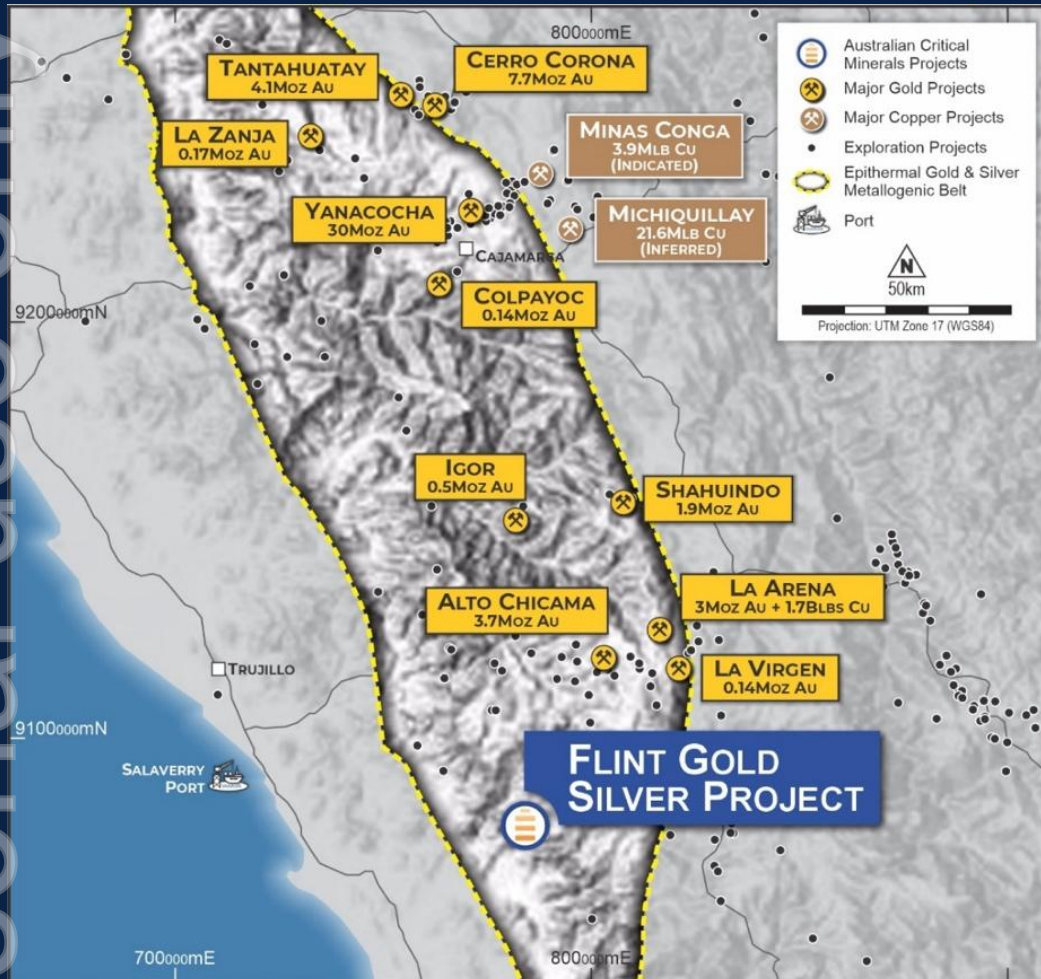
Inventory Projects

Several projects are held or are under evaluation as part of the Company's ongoing inventory and value building.



FLINT PROJECT

Location and Major Local Minesites



- **Claims Package covers ~19.7 km²**
- **World Class Metallogenic Belt:**
 - 10 Major deposits
 - Resources exceeding 50Moz Gold
- **Access and Location:**
 - Road Access through Project
 - 80 km East of Trujillo - population +1M
- **Social License:**
 - Private landowner access agreements in place

FLINT PROJECT

3 GOLD - SILVER HIGH SULPHIDATION TARGET CLUSTERS NORTH, SOUTH & CENTRAL. CURRENT NORTHERN TARGET FOCUS



NSAMT geophysics identifies 2 large resistive targets north and south of a large chargeability anomaly in the centre of the Project



Trace Element Geochemistry confirmed as being very strongly anomalous and indicative of the HSE system



Compilation of all data has defined multiple High Sulphidation Epithermal (HSE) Drill Targets supported by geophysics and geochemistry



Rock Geochemistry and acid leached hydrothermal alteration correlate with the HSE exploration model



Modelling validated the HSE model with strong comparisons with La Coipa and Salares Norte Au-Ag HSE Projects

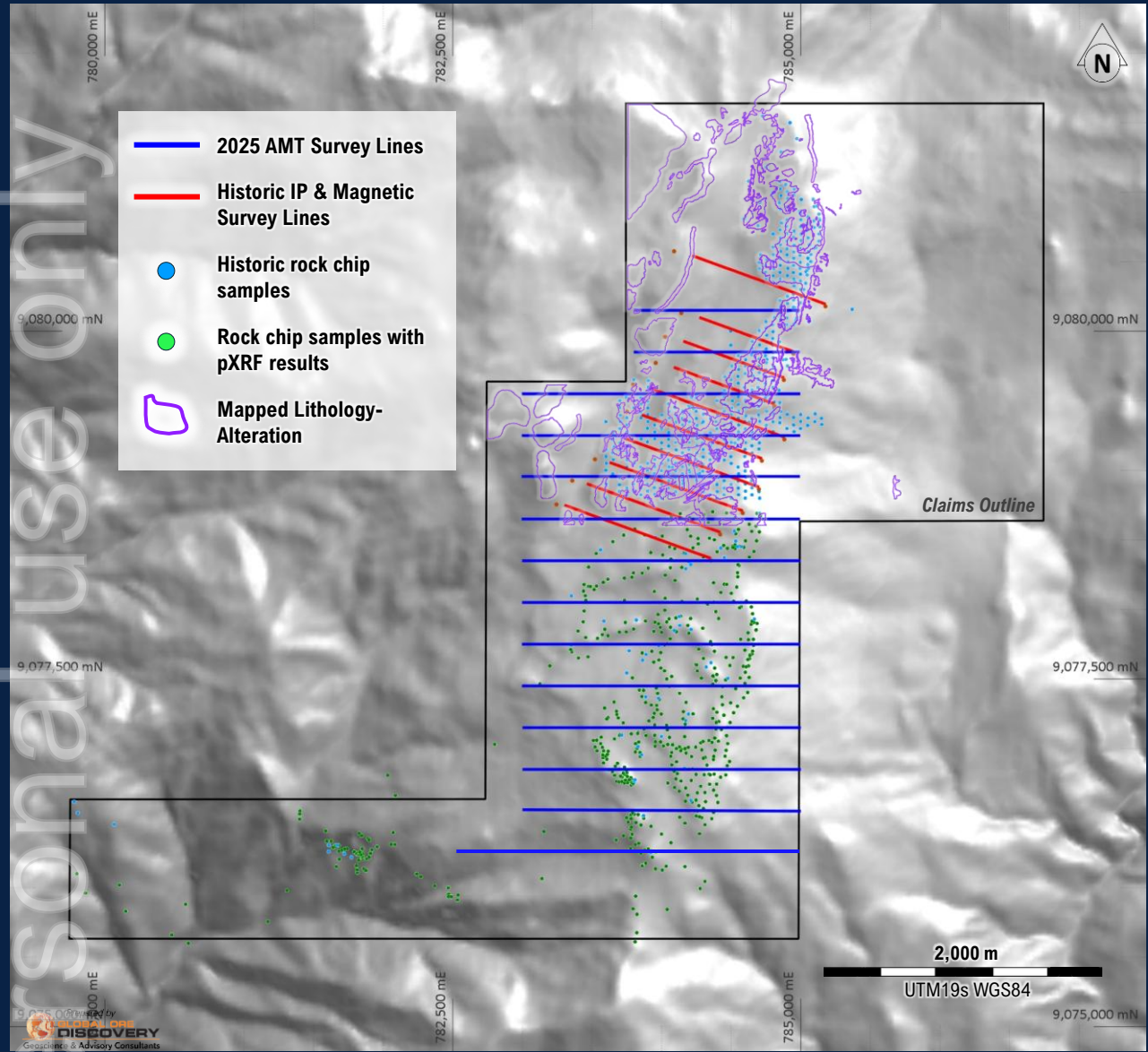


4 priority drillholes for 1920m planned for Q1 commencement





Flint: Geophysics, Surface Geochemistry and Mapping Coverage



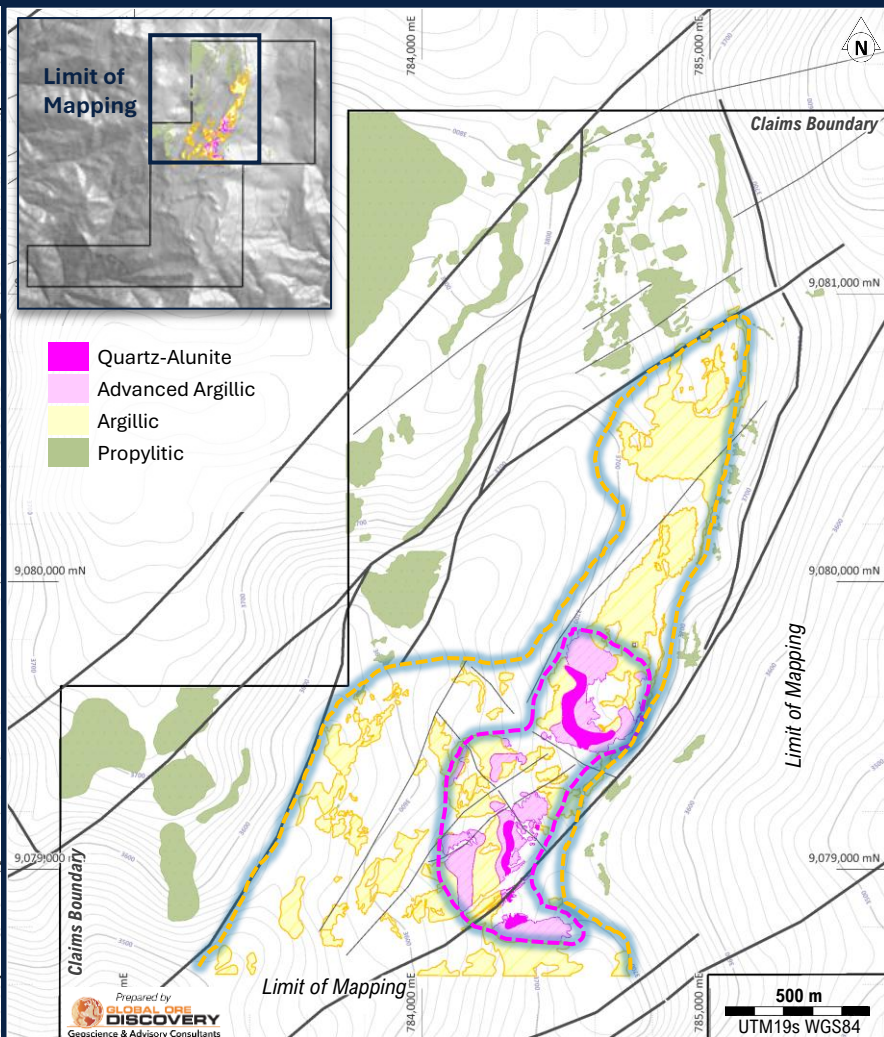
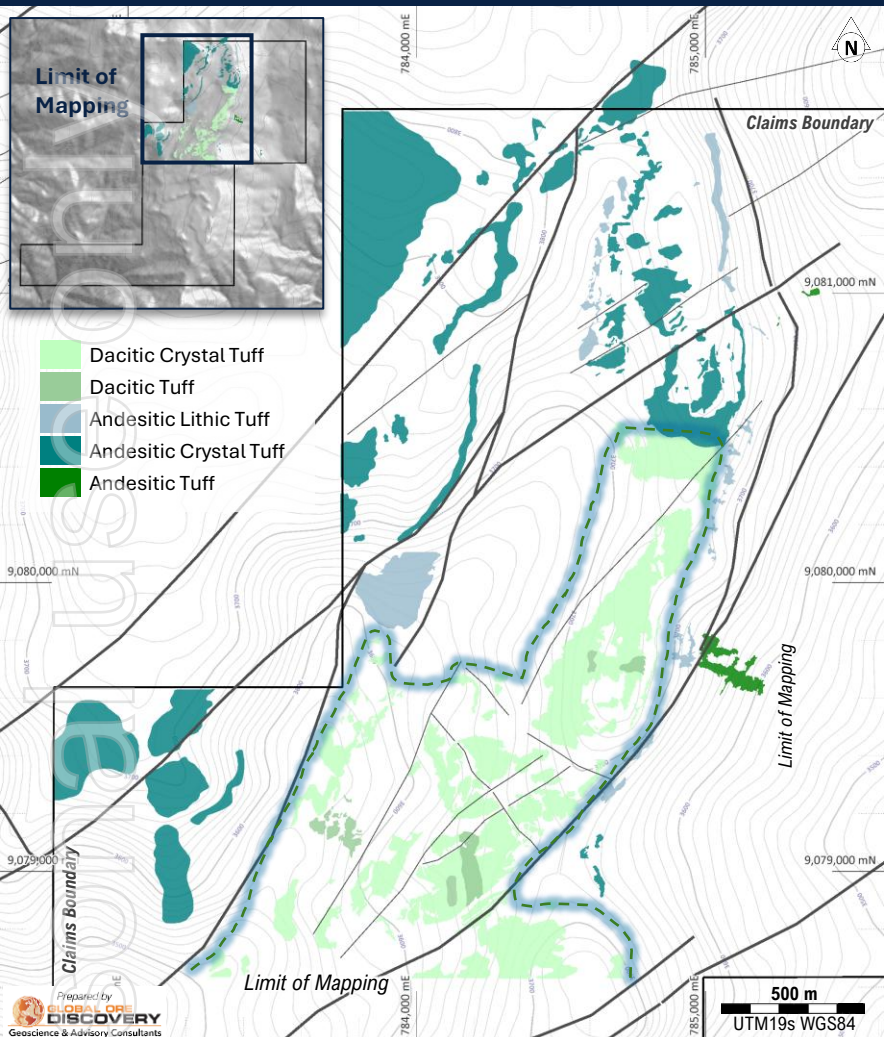
- **Claims Package covers ~19.7 km²**
- **Geophysics:**
 - ACM 2025 AMT survey, 14 lines for 26.5 line-km
 - Historic IP & Magnetics, 10 lines for 9.2 line-km
- **Historic Surface Geochemistry:**
 - 570 Historic rock chip samples multielement assays
 - 501 PXRf rock chip samples
- **30% of claims covered with Geology Mapping:**
 - 1.3 km² of geologic mapping (lithology and alteration)
- **Compilation of historical and recent datasets supports HSE targeting and drillhole design**



Flint: Lithology and Alteration

Lithology – Andesitic to Dacite composition

Alteration – Large Advanced Argillic zone

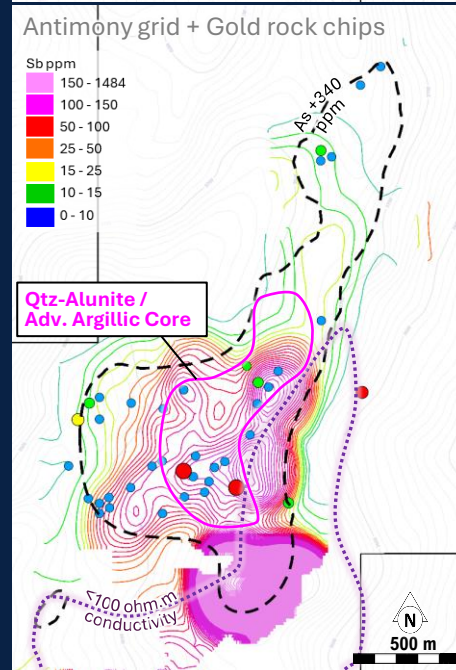
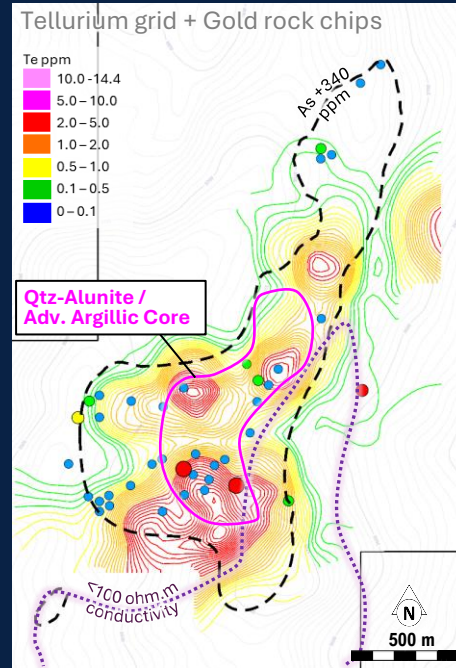
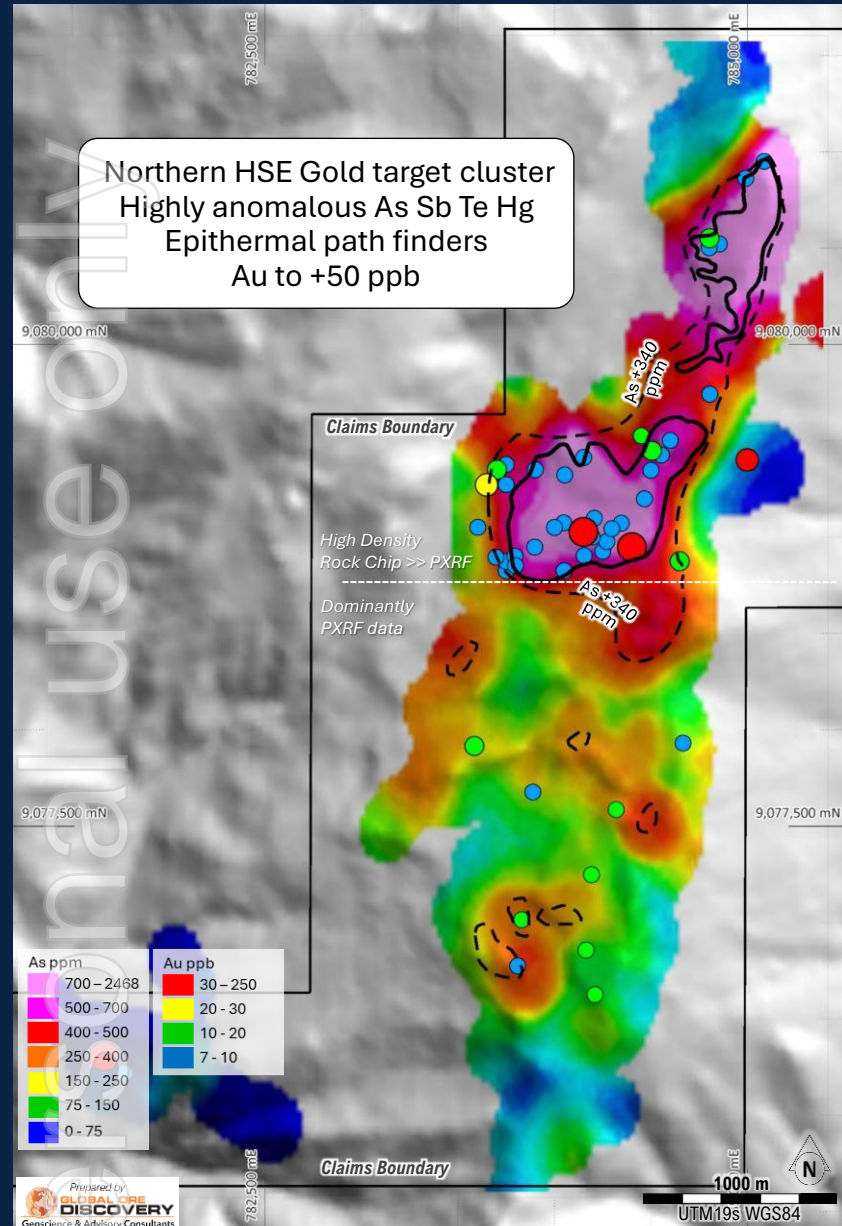


Large scale alteration typical of High Sulfidation Epithermal (HSE) Au Ag systems

- +2.5 km alteration system mapped to date - open to the south
- +1 km Qtz-Alunite/Advanced Argillic altered core
- Volcanic host sequence shows evolving magmas from andesitic to younger dacitic composition
- Alteration and (mineralization?) hosted in dacite sequence
- As seen at many large HSE deposits in Andes

Flint: Geochemistry

Rock chip arsenic Grid + Gold >7ppb Points



- High order As Sb Te rock chip anomaly extends for 2.5 km
- Localised Au to + 50 ppb and Ag in rock chip – significant in terms of pathfinder trace element geochemistry
- Coincident with mapped Advanced Argillic alteration with a quartz-alunite core
- Characteristics of steam heated / advanced argillic alteration cap over potential concealed HSE gold – silver mineralisation
- Arsenic pathfinder very strong and provides project level targeting
- Tellurium and provides guidance to the region immediately above the system core.
- Low level gold provides guidance to structural weaknesses and confirm the underlying system to be gold bearing
- In HSE systems Gold and silver is deposited below the ancient (paleo) water table. Above the water table steam heated acidic gases alter the rocks to clay. Volatile elements (eg As Te Sb) extend above the paleo water table and are represented in the trace element geochemistry that is observed at Flint.

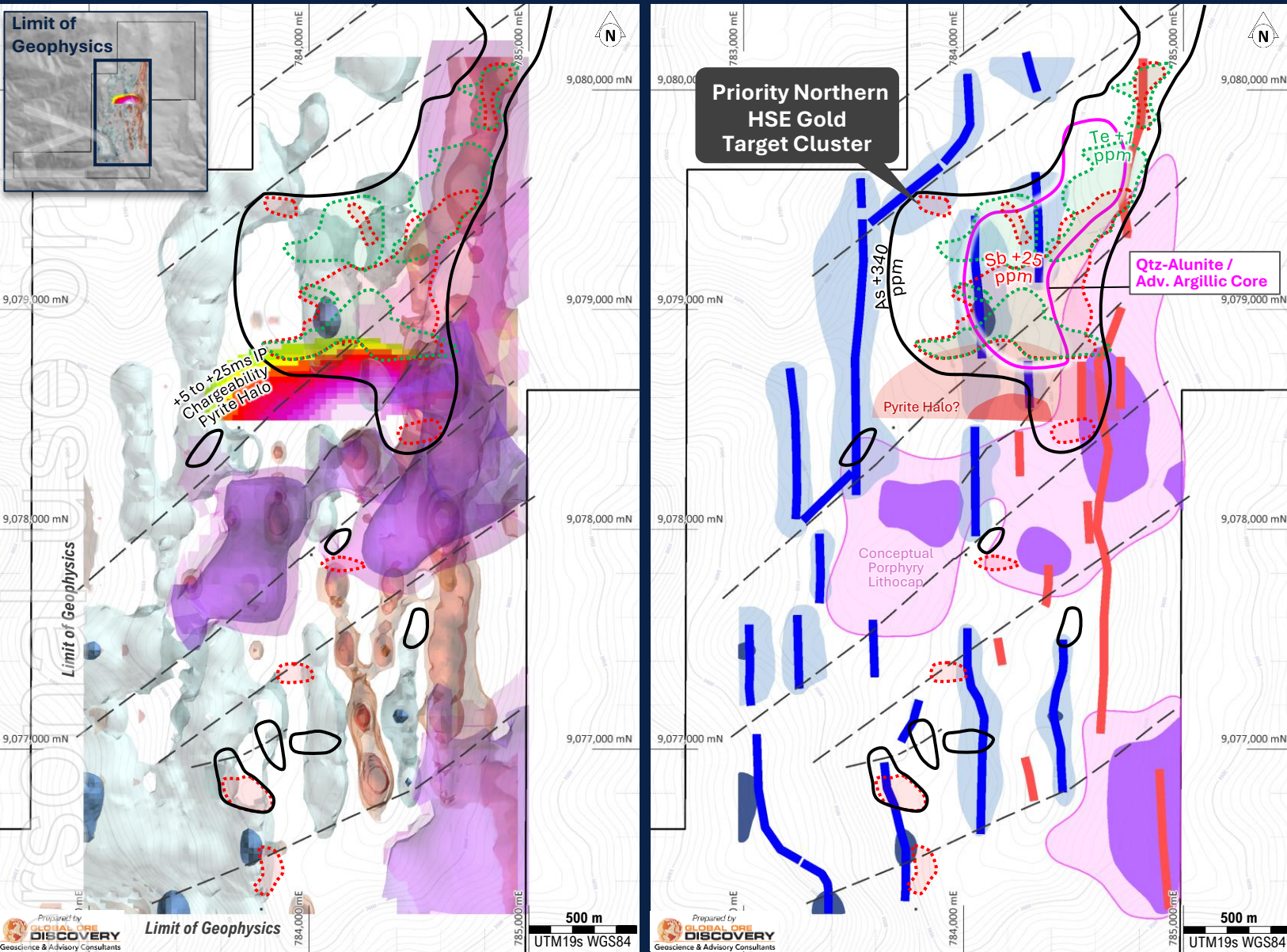


Flint: Geophysics



AMT & IP Geophysics

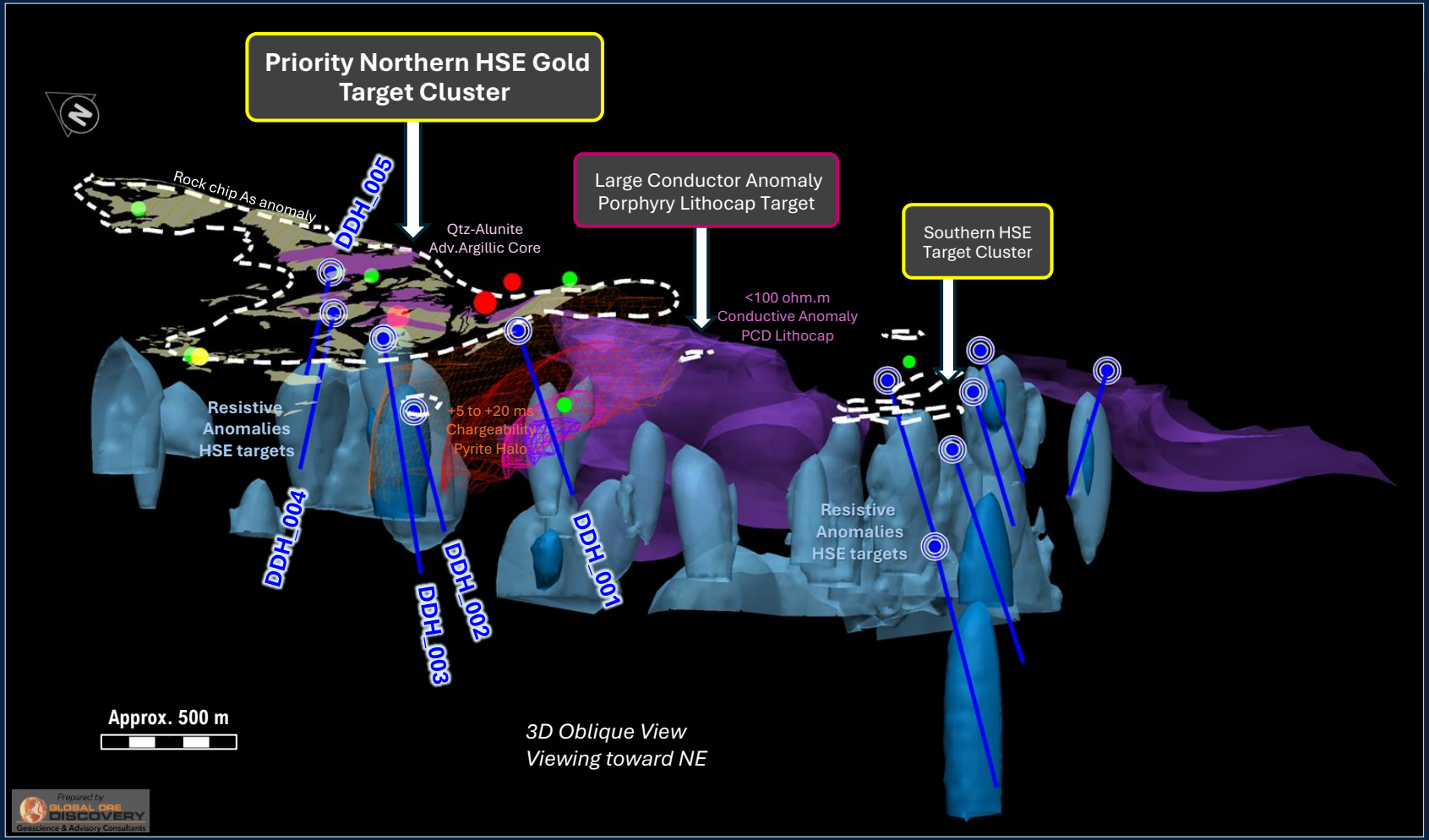
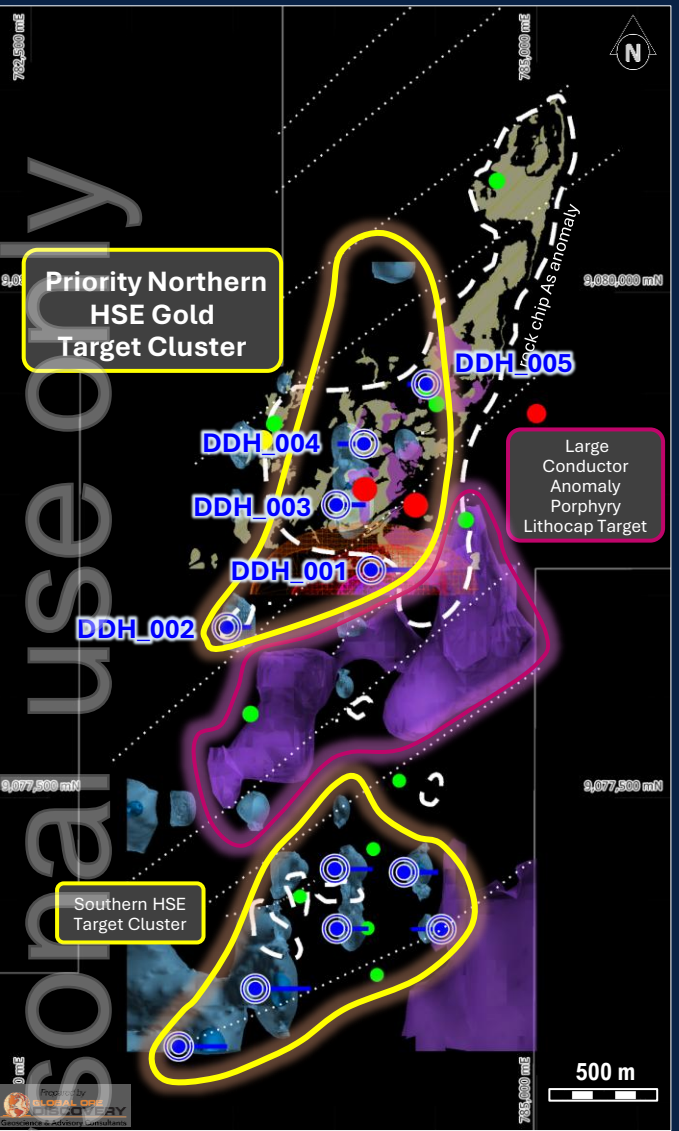
Interpretation



- Linear Chargeability and NSAMT Resistive features identified
- Extensive strong arsenic geochemistry
- Qtz-alunite argillic alteration core
- Resistivity results are significant for the Natural Source AMT method
- Crustal scale structural features provide fluid flow conduits

AMT 1D Inversion (Resistive)	Resistive Linears
● +1250 ohm.m	Blue line
● +300 ohm.m	Red line
(Conductive)	Conductive Linears
● < 50 ohm.m	Red line
● < 75 ohm.m	Red line
AMT 3D Inversion (Conductive)	+25 ms IP chargeability
● < 75 ohm.m	Red circle
● < 100 ohm.m	Red circle
	+5 ms IP chargeability (pyrite halo)
	Red circle
	Structural Breaks
	Dashed line
	Rock Chip Anomaly
	Black outline
	As +340 ppm
	Red dotted line
	Sb +25 ppm
	Red dotted line
	Te +1 ppm
	Green dotted line

Flint: 3 Target Clusters - Drill Hole Planning

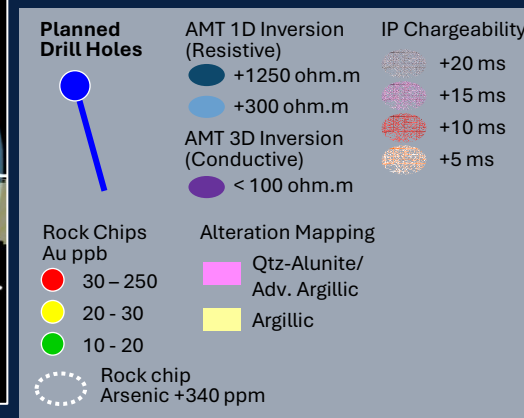
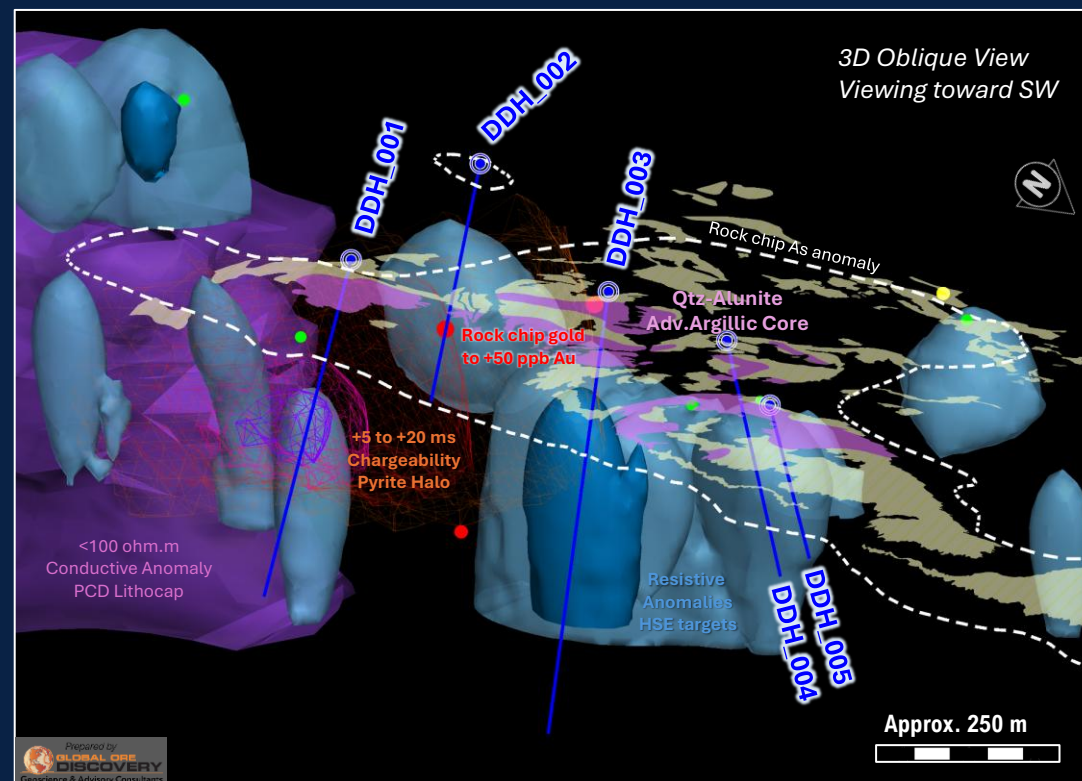
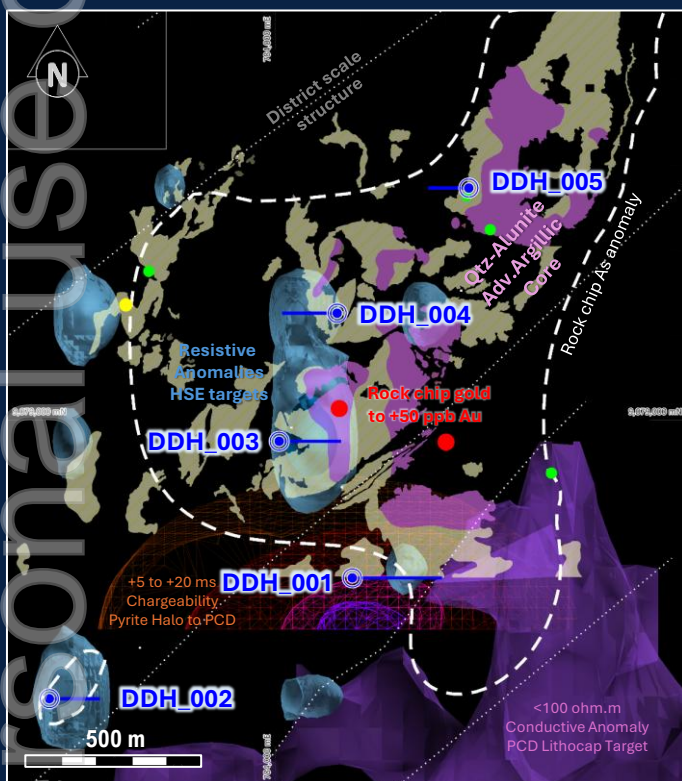


Planned Drill Holes	AMT 1D Inversion (Resistive)	IP Chargeability	Rock Chips Au ppb	Alteration Mapping
	+1250 ohm.m	+20 ms	30 - 250	Qtz-Alunite/ Adv. Argillic
	+300 ohm.m	+15 ms	20 - 30	Argillic
	AMT 3D Inversion (Conductive)	+10 ms	10 - 20	
	< 100 ohm.m	+5 ms	Rock chip Arsenic +340 ppm	

Personal use only

Flint: Priority Drill Holes

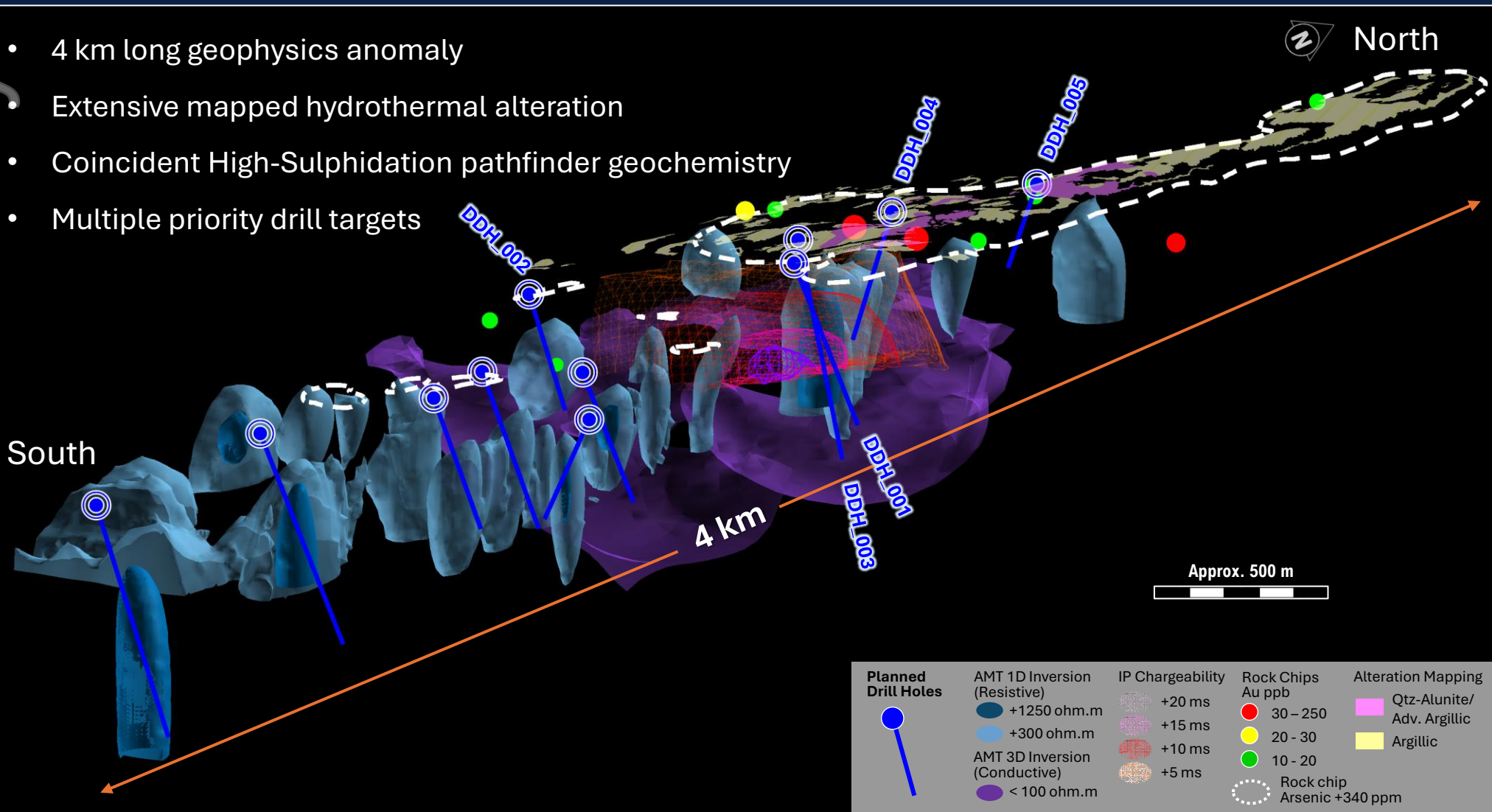
- Northern HSE Target Cluster - conceptual HSE Au Ag breccia pipe and quartz-alunite replacement targets
- Mapped zones of advanced argillic / quartz-alunite alteration
- Planned priority drilling of 5 drillholes for 2200 m
- Higher priority target spatially associated with peak rock chip gold anomaly of 53 ppb Au with supportive trace elements
- Note the discovery history of Goldfields Salares Norte HSE gold – Silver mine was based on a max 50 ppb Au result
- Flint geophysics anomalies substantially larger than Salares Norte ore body





Flint: Compelling Priority Drill Targets

- 4 km long geophysics anomaly
- Extensive mapped hydrothermal alteration
- Coincident High-Sulphidation pathfinder geochemistry
- Multiple priority drill targets



ersonal use only

HSE - Gold Summary: Exploration Checklist

High Sulphidation Epithermal Gold-Silver Checklist	Salares Norte	Alturas	Flint HSE Project
District scale advanced argillic and argillic alteration	✓	✓	✓
Differentiated volcanic complex – Andesitic to Dacitic (rhyolitic) dome field + pyroclastics	✓	✓	✓
Zoned alteration mineral vectors evident in soils / outcrop	✓	✓	✓
Anomalous zoned soil geochemistry (As, Sb, Te, Hg, Bi, Ba)	✓	✓	✓
Anomalous Au/Ag in rock chip geochemistry suggest fertile system	✓	✓	✓
Large scale resistive features in electrical geophysics	✓	✓	✓

Salares Norte

- Reserve – 4.1 Moz AuEq (2018)
- Maiden Resource - 4.5 Moz AuEq *

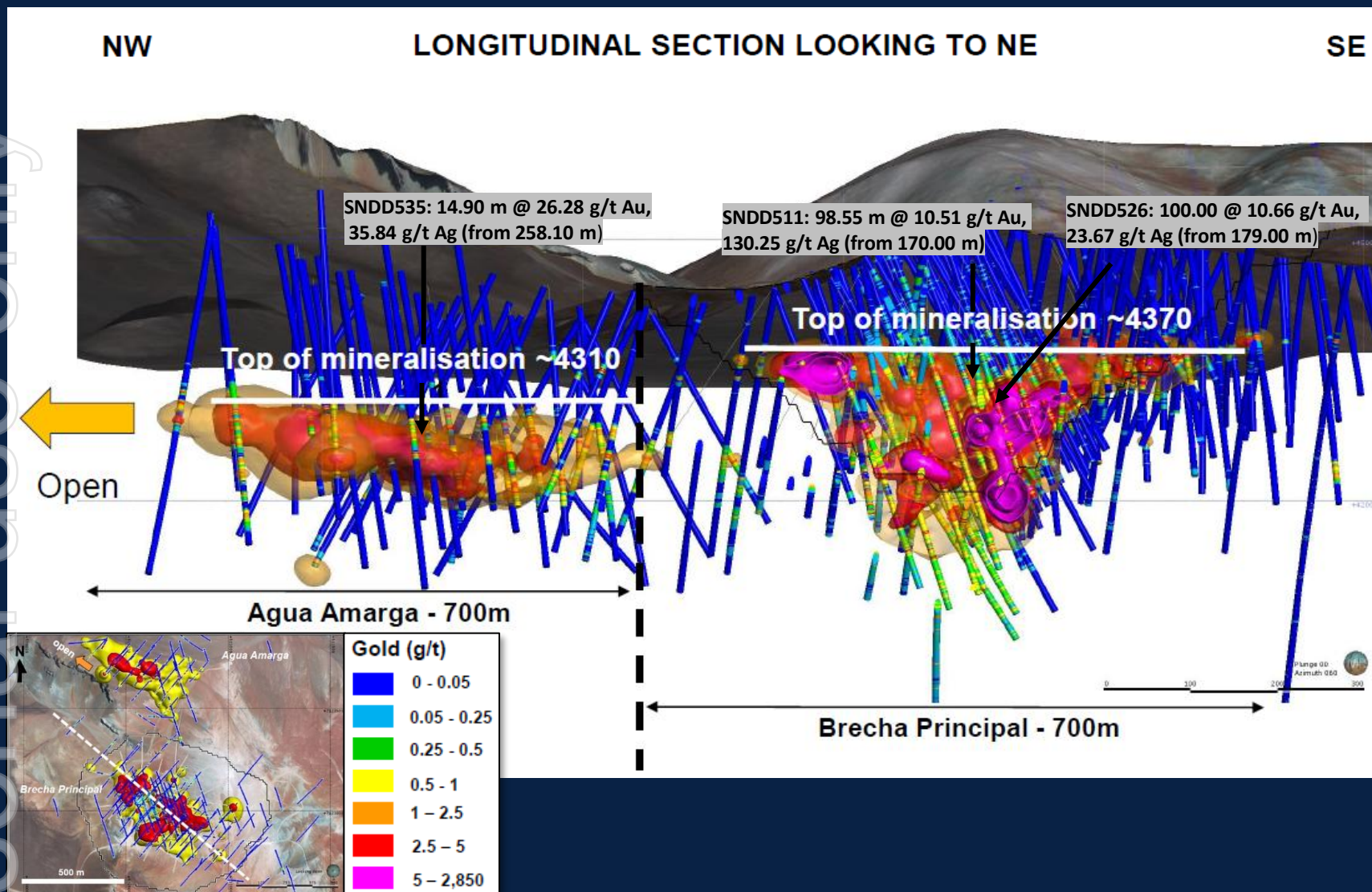
Alturas 2024 Mineral Resource**

- 192 Mt at 0.94 g/t Au → 5.8 Moz of Au (2024)**

*Gold Fields Limited. (2018). *Gold Fields mineral resources and mineral reserves supplement 2018: Salares Norte project (100% attributable to Gold Fields)*. Gold Fields Limited.

**Boroo Pte Ltd. (2024, December). *Boroo reaches agreement to acquire the Alturas Project- News Release*

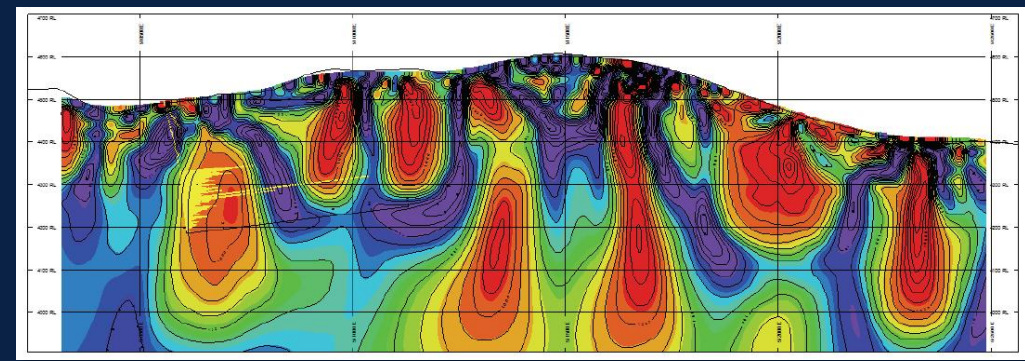
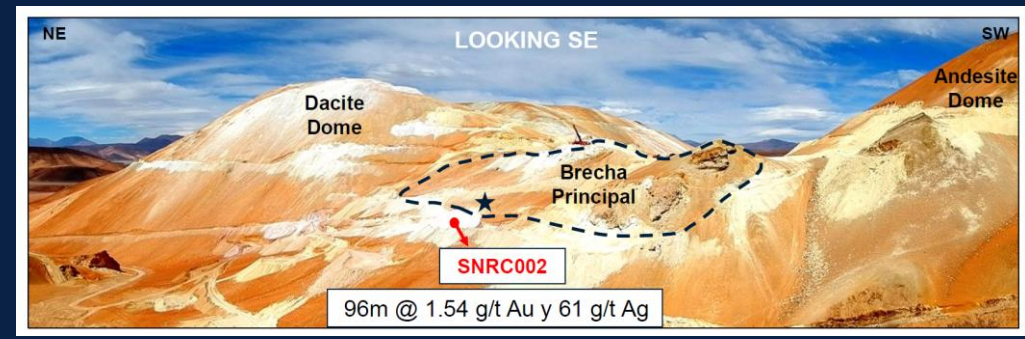
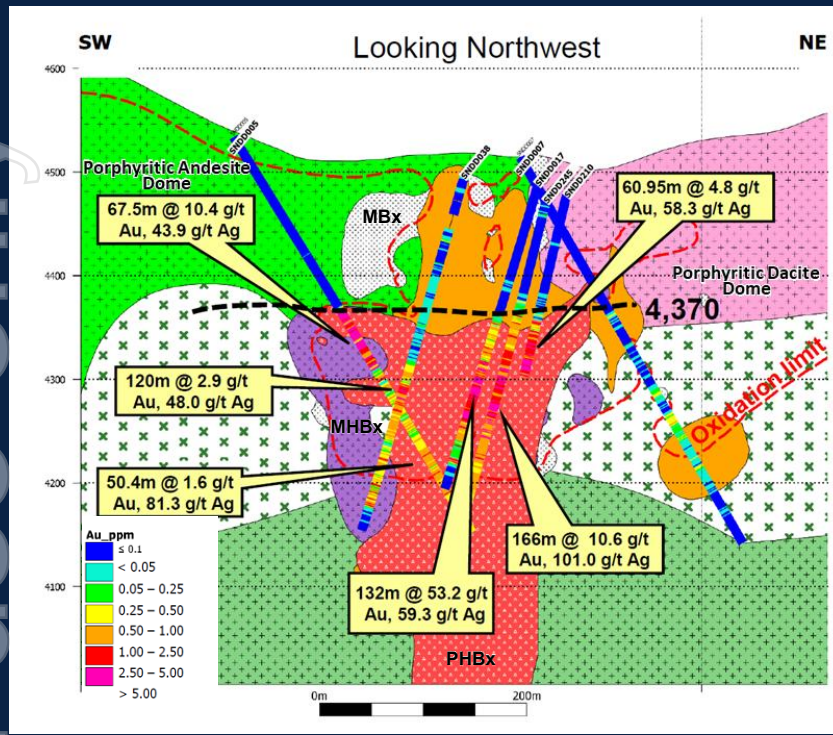
HSE – Deposit Similarities and Key Features



- 150 – 250m thick gold-barren (0 – 50ppb) steam heated and advanced argillic alteration cap, concealing Salares Norte and Agua Amarga gold-silver deposits.
- Barren surface is important in HSE systems – Indicates the system has not been eroded
- Erratic, extremely low level Au Ag leakage overlying Salares Norte orebody.
- Approx 150m below surface mineralisation has a flat-top which represents paleo-water table. Gold and Silver precipitate at or below this level. Steam heated gaseous fluids leach the rocks above the water table where trace path finder elements precipitate.



HSE – Salares Norte Deposit Similarities and Key Features



- Barren surface cap to approx. 150m
- Pre-mineral Andesite to Dacite domes – evolving magmas
- Extensive strong As in surface soil samples
- Gold and silver mineralisation below the paleo-water table
- Breccias commonly enhance mineralisation and produce high grade intersections
- Multiple mineralising events evident hydrothermal and phreomagmatic breccias
- The AMT geophysics is a proven method in guiding exploration HSE Au Ag systems
- Strong correlation between mineralisation, vuggy silica and AMT resistors

CONTACT US

Dean de Largie

dean@auscriticalminerals.com.au

+61 448 713 121

Paul Berson

paul@corporatestorytime.com

+61 421 467 445

A U S T R A L I A N
CRITICAL MINERALS

DISCLAIMER

This presentation has been prepared by Australian Critical Minerals Limited (“Company”). It does not purport to contain all the information that a prospective investor may require in connection with any potential investment in the Company. You should not treat the contents of this presentation, or any information provided in connection with it, as financial advice, financial product advice or advice relating to legal, taxation or investment matters.

No representation or warranty (whether express or implied) is made by the Company or any of its officers, advisers, agents or employees as to the accuracy, completeness or reasonableness of the information, statements, opinions or matters (express or implied) arising out of, contained in or derived from this presentation or provided in connection with it, or any omission from this presentation, nor as to the attainability of any estimates, forecasts or projections set out in this presentation.

This presentation is provided expressly on the basis that you will carry out your own independent inquiries into the matters contained in the presentation and make your own independent decisions about the affairs, financial position or prospects of the Company. The Company reserves the right to update, amend or supplement the information at any time in its absolute discretion (without incurring any obligation to do so).

Neither the Company, nor its related bodies corporate, officers, their advisers, agents and employees accept any responsibility or liability to you or to any other person or entity arising out of this presentation including pursuant to the general law (whether for negligence, under statute or otherwise), or under the Australian Securities and Investments Commission Act 2001, Corporations Act 2001, Competition and Consumer Act 2010 or any corresponding provision of any Australian state or territory legislation (or the law of any similar legislation in any other jurisdiction), or similar provision under any applicable law. Any such responsibility or liability is, to the maximum extent permitted by law, expressly disclaimed and excluded.

Nothing in this material should be construed as either an offer to sell or a solicitation of an offer to buy or sell securities. It does not include all available information and should not be used in isolation as a basis to invest in the Company.

ASX Listing Rule 5.23.2

The Company confirms that it is not aware of any new information or data that materially affects the information included in this announcement. No exploration data or results is included in this document that has not previously been released publicly. The source of all data or results have been referenced.

Future matters

This presentation contains reference to certain intentions, expectations, future plans, strategy and prospects of the Company.

Those intentions, expectations, future plans, strategy and prospects may or may not be achieved. They are based on certain assumptions, which may not be met or on which views may differ and may be affected by known and unknown risks. The performance and operations of the Company may be influenced by a number of factors, many of which are outside the control of the Company. No representation or warranty, express or implied, is made by the Company, or any of its directors, officers, employees, advisers or agents that any intentions, expectations or plans will be achieved either totally or partially or that any particular rate of return will be achieved.

Given the risks and uncertainties that may cause the Company’s actual future results, performance or achievements to be materially different from those expected, planned or intended, recipients should not place undue reliance on these intentions, expectations, future plans, strategy and prospects. The Company does not warrant or represent that the actual results, performance or achievements will be as expected, planned or intended.

US disclosure

This document does not constitute any part of any offer to sell, or the solicitation of an offer to buy, any securities in the United States or to, or for the account or benefit of any “US person” as defined in Regulation S under the US Securities Act of 1993 (“Securities Act”). The Company’s shares have not been, and will not be, registered under the Securities Act or the securities laws of any state or other jurisdiction of the United States, and may not be offered or sold in the United States or to any US person without being so registered or pursuant to an exemption from registration including an exemption for qualified institutional buyers